



PART OF ALIMAK GROUP



Tralift Cleantech manual chain hoist

Stainless steel version

www.tractel.com

Tralift Cleantech manual chain hoist

Stainless steel version

SAFETY:

- 360° rotating hooks marked with the WLL of the hoist and fitted with safety latches
- Designed and built to withstand dynamic tests at 1,1 x WLL and static at 1,5 x WLL

EFFECTIVENESS:

- Specially designed for applications in the food, pharmaceutical, cosmetics sectors and in clean rooms
- Also in aggressive environments with salt water or dust due to the excellent corrosion resistance

TECHNICAL SPECIFICATION:

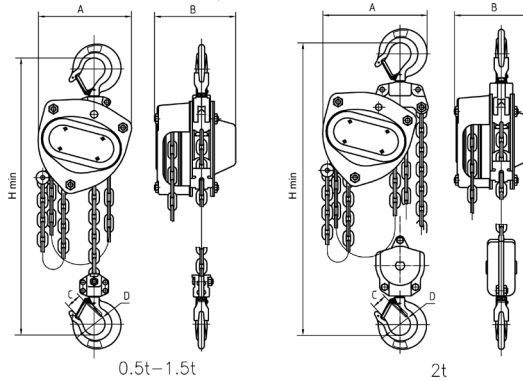
- Capacity (WLL): 500 kg to 2.000 kg
- Material: Stainless steel
- Lifting chain & hand chain in stainless steel
- Standard lifting height: 3 m

HIGH QUALITY FINISH:

- Robust device, manufactured with high quality materials
- Type food grease

ERGONOMICS:

- Compact and lightweight
- Portable and easy to install



SPECIFICATIONS:

WLL (t)	Lifting height (m)	Minimum distance between hook Hmin (mm)	Tensile stress on hand chain at WLL (daN)	Number of strands	Ø of load chain	Ø of hand chain	Dimensions (mm)					Weight (kg)	Sound pressure at 1 m dB (A)
							A	B	C	D	M		
0,5	3	376	15	1	6x18	5x23,3	172	151	26	40	46.5	11.4	88
1,0		376	31		7x21		26		40	46.5	14	91	
2,0		425	34	2	7x21		34		50	61.5	21.1	89	

Corso Cleantech trolley

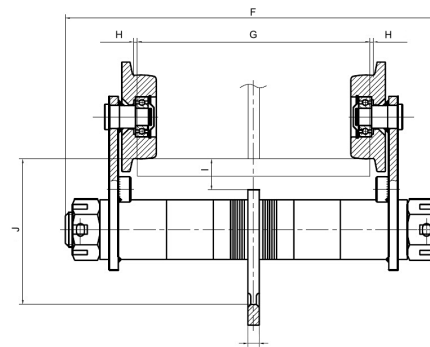
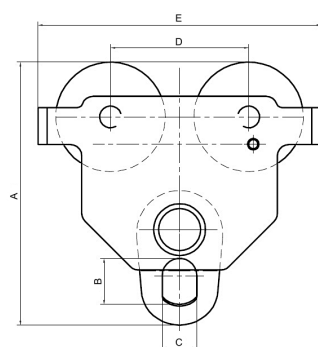
Stainless steel version

TECHNICAL SPECIFICATION:

- Device mainly made up of stainless steel components,
- Steel rollers mounted on ball bearings greased for life,
- Steel side plates with end bumpers and fall arrest device,
- Heavy-section hanger shaft with adjustment spacers, locking nuts and safety pins,
- Designed and built to withstand dynamic tests at 1.1 x WLL(2) and static at 1.5 x WLL
- Dimensioned to guarantee a minimum mechanical resistance of 4 x WLL



WLL (t)	A	B	C	D	E	F	G	H	I	J	K	Min. curve radius (mm)	Weight (kg)
1,0	229	40	30	120	246	327	64-203	1.5-3	27	127	10	1000	12
2,0	268	52	38	132	276	345	88-203	1.5-3	27	150	12	1100	19.5



TRACTEL LIMITED

Old Lane Halfway
Sheffield S20 3GA United Kingdom
Phone: +44 114 248 22 66
sales.uk@tractel.com